

Drop in Isolator 45 ~ 270MHz

Application

- ▶ RF power amplifier protection.
- ▶ Digital, Satellite, Mobile Communication.
- ▶ Medical, Communication, Security.
- ▶ Military, Space and Commercial applications.

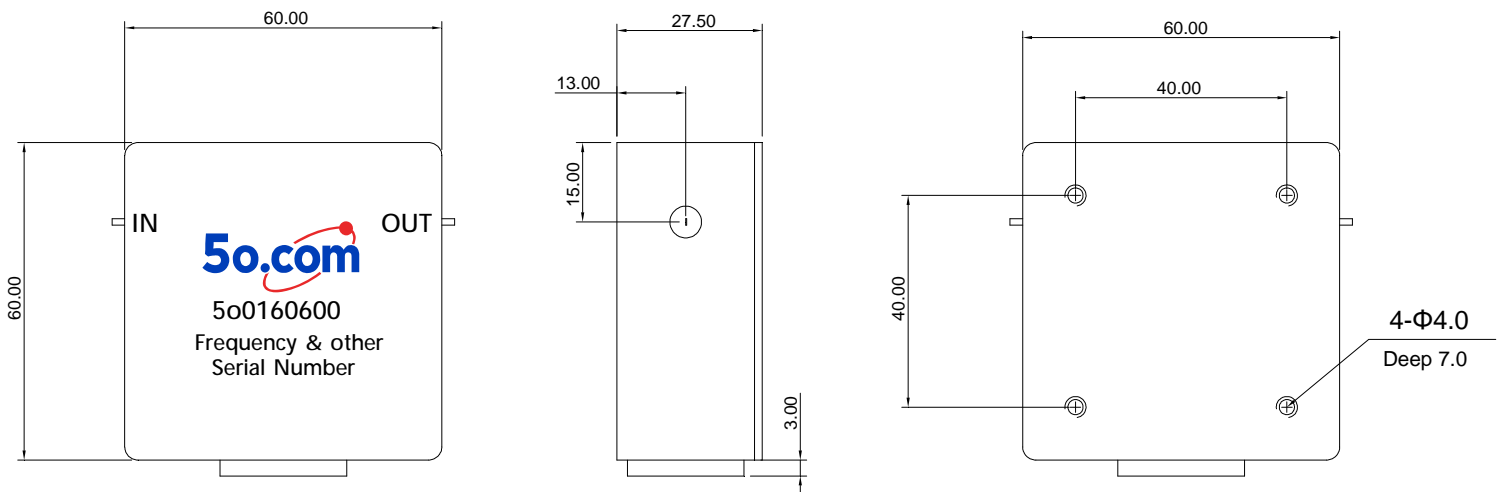
RF Characteristics

Part Number	Frequency Range (MHz)	Isolation Min(dB)	VSWR Max	Insertion Loss Max(dB)	Connector Type	Temp.(°C)
5o01606004550	45 ~ 50	18	1.3	1.5	TAB	-10 ~ +65
5o01606004555	45 ~ 55	18	1.3	1.8	TAB	-10 ~ +65
5o01606005075	50 ~ 75	18	1.3	1.8	TAB	-10 ~ +65
5o01606005575	55 ~ 75	18	1.3	1.2	TAB	-10 ~ +65
5o01606006065	60 ~ 65	20	1.25	1.0	TAB	-10 ~ +65
5o01606006570	65 ~ 70	20	1.25	1.0	TAB	-10 ~ +65
5o01606006888	68 ~ 88	18	1.3	1.3	TAB	-20 ~ +65
5o01606007085	70 ~ 85	20	1.25	0.8	TAB	-20 ~ +65
5o01606007090	70 ~ 90	20	1.25	1.0	TAB	-20 ~ +65
5o016060080120	80 ~ 120	18	1.3	1.0	TAB	0 ~ +65
5o016060085135	85 ~ 135	18	1.3	1.2	TAB	-10 ~ +65
5o016060087108	87 ~ 108	20	1.25	0.6	TAB	-20 ~ +65
5o016060087108P200	87 ~ 108	20	1.25	0.6	TAB	-20 ~ +65
5o016060088138	88 ~ 138	18	1.3	1.0	TAB	-10 ~ +65
5o0160600100130	100 ~ 130	20	1.25	0.6	TAB	-30 ~ +70
5o0160600100150	100 ~ 150	18	1.3	1.0	TAB	-10 ~ +65
5o0160600108118	108 ~ 118	23	1.2	0.5	TAB	-30 ~ +70
5o0160600108118P200	108 ~ 118	23	1.2	0.5	TAB	-30 ~ +70
5o0160600112156	112 ~ 156	20	1.25	0.8	TAB	-30 ~ +70
5o0160600118137	118 ~ 137	23	1.2	0.5	TAB	-30 ~ +70
5o0160600118137P200	118 ~ 137	23	1.2	0.5	TAB	-30 ~ +70
5o0160600130180	130 ~ 180	20	1.25	0.6	TAB	-30 ~ +70
5o0160600136174	136 ~ 174	22	1.2	0.5	TAB	-30 ~ +70
5o0160600136174P200	136 ~ 174	22	1.2	0.5	TAB	-30 ~ +70
5o0160600148174P150	148 ~ 174	25	1.15	0.5	TAB	-30 ~ +70
5o0160600150200	150 ~ 200	20	1.25	0.6	TAB	-30 ~ +70
5o0160600150225	150 ~ 225	18	1.3	0.9	TAB	-30 ~ +70
5o0160600170200	170 ~ 200	20	1.25	0.5	TAB	-30 ~ +70
5o0160600170200P200	170 ~ 200	20	1.25	0.5	TAB	-30 ~ +70
5o0160600180220	180 ~ 220	20	1.25	0.5	TAB	-30 ~ +70
5o0160600200270	200 ~ 270	20	1.25	0.7	TAB	-30 ~ +70

Basic Specifications

Dimension	60*60*28mm
Forward Power	100W
Reverse Power	50W
Connector Type	TAB
Storage Temperature	-40°C~+125°C
Impedance	50Ω

Overall Dimension(mm)



Instructions

Tolerances: ±2% unless otherwise stated.

- ◆ It can be dual junction or multiple for high isolation.
- ◆ Installing the embedded isolator/circulator, please use stainless steel or brass screws.
- ◆ Only some common frequencies in the table can be produced according to the user's requirements.
- ◆ It supports a one-year standard warranty.